



Victoria Park Square, London, E2

BUTLER  STAG



Price Guide - £500,000 to £550,000
Step into this stunning 2-bedroom flat located within a distinguished 1930s-period mansion block on Victoria Park Square in Bethnal Green. This elegant residence combines classic charm with modern conveniences, offering a sophisticated living space in one of London's most vibrant neighborhoods.



Leasehold

- Two Double Bedrooms
- Stunning Victoria Park Square
- Full Of Light & Character
- Timeless Decor With Classic Features
- 1930s Mansion Block
- On Top Of All Your Amenities
- Moments From Bethnal Green station
- Close to Victoria Park

The flat boasts well-proportioned rooms with high ceilings, large sash windows, and beautiful period details that reflect its 1930s heritage. The spacious living room serves as the heart of the home, featuring ample natural light and a cozy ambiance, perfect for both relaxation and entertaining.

The kitchen is tastefully designed with classic design fixtures and integrated appliances, providing a practical and stylish space for culinary activities. Both bedrooms are generously sized, offering peaceful retreats with plenty of storage options. The bathroom is finished to a chic standard, complementing the overall aesthetic of the property.

Nestled in the charming area of Bethnal Green, this mansion block flat benefits from its prime location on Victoria Park Square. Residents can enjoy the nearby green spaces of Victoria Park, renowned for its scenic beauty and recreational facilities. The local area is bustling with a mix of trendy cafes, bars, and independent shops, ensuring a dynamic and engaging lifestyle.

Bethnal Green offers excellent transport links, including the Bethnal Green Underground Station and numerous bus routes, providing easy access to the City, West End, and beyond.

This property is a perfect choice for those seeking a unique and stylish home with historical charm in a vibrant and well-connected area. Whether you are a professional couple, a small family, or an investor, this period mansion block flat on Victoria Park Square offers a superb living experience.

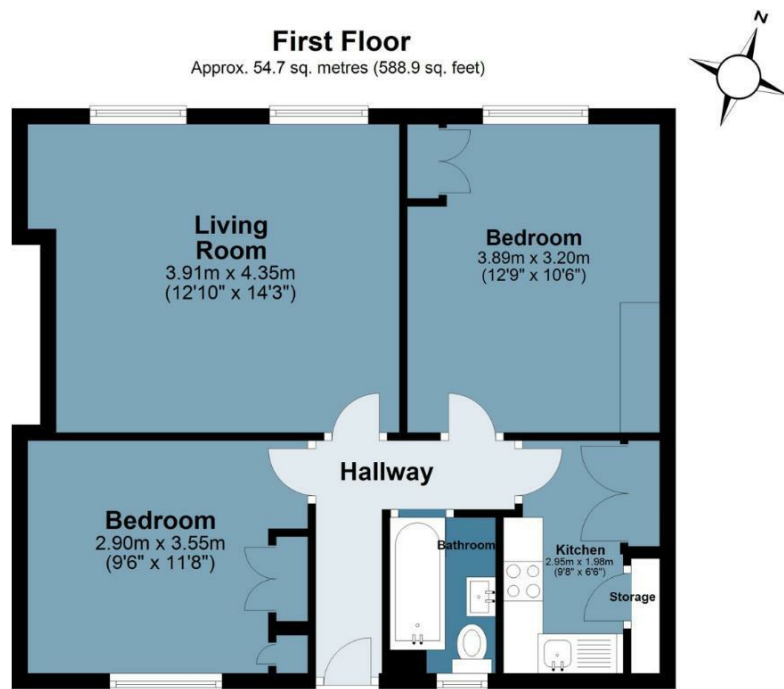




Mulberry House

Approx. Gross Internal Area 54.7 sq. metres (588.9 sq. feet)

BUTLER & STAG



Measurements are approximate and for illustration purposes only. While we do not doubt the accuracy and completeness, we advise you conduct a careful independent assessment of the property to determine monetary value
© @modephoto.uk www.modephoto.co.uk

IMPORTANT NOTICE - These particulars have been prepared in good faith and they are not intended to constitute part of an offer or contract. We have not performed a structural survey on this property and the services, appliances and specific fittings have not been tested. All photographs, measurements, floor plans and distances referred to are given as a guide and should not be relied upon.

BUTLER & STAG

☎ 020 8102 1236

🏠 508 Roman Road, Bow, London, E3 5LU

✉ bow@butlerandstag.com

www.butlerandstag.uk